

APPENDIX B – DESIGN AMENDMENTS AND SECTIONS

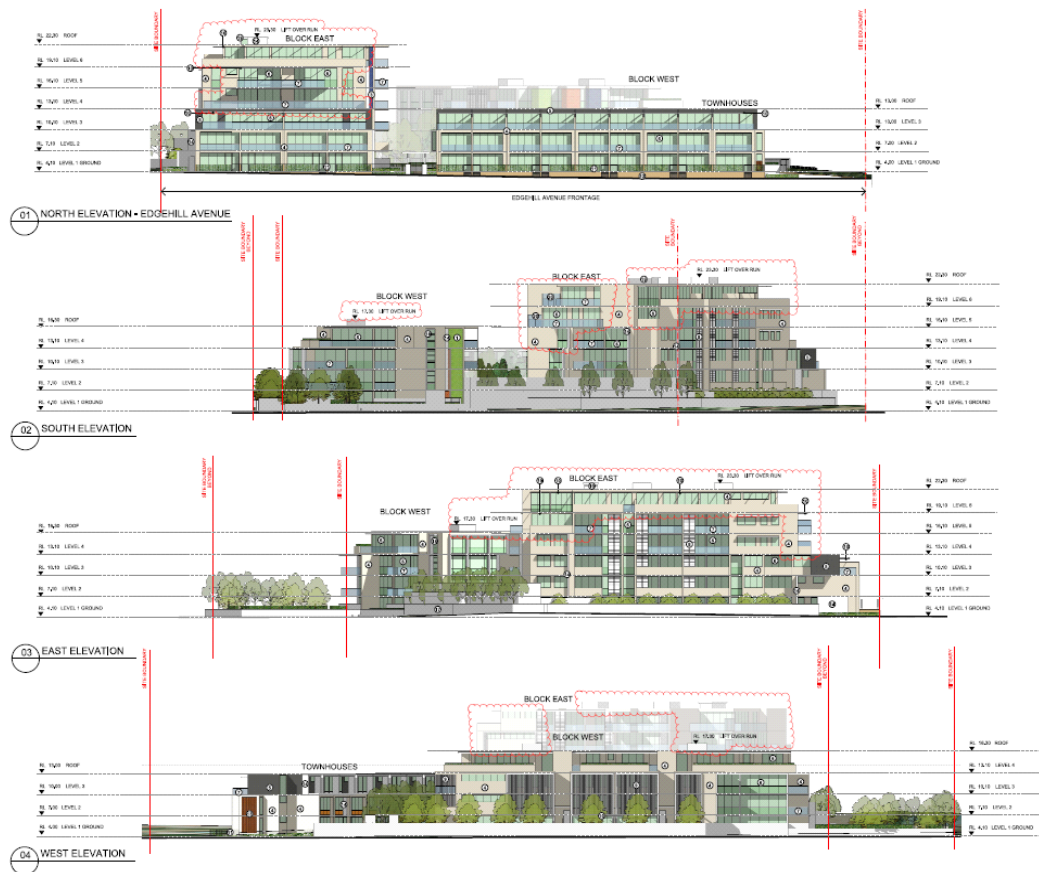


18 July 2013 – Preliminary DRP submission for a 7-storey building



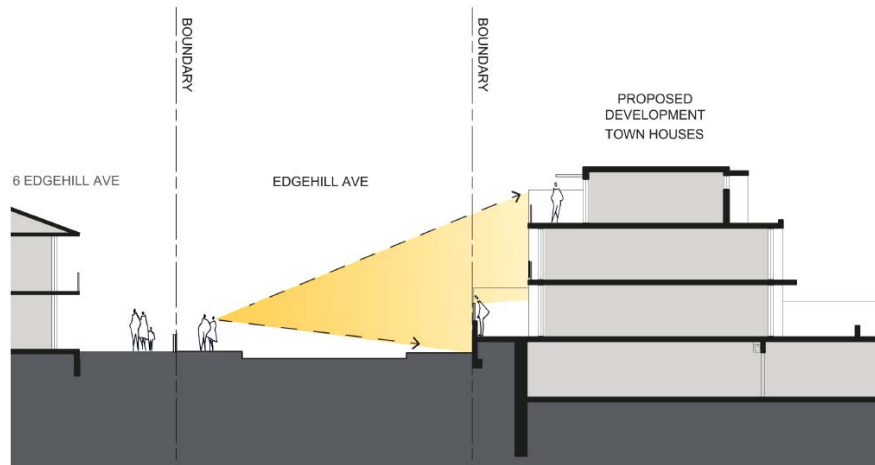
6

March 2014 – DA submission to Council for East Block (4 storeys) and West Block (Part 3-6 storeys)

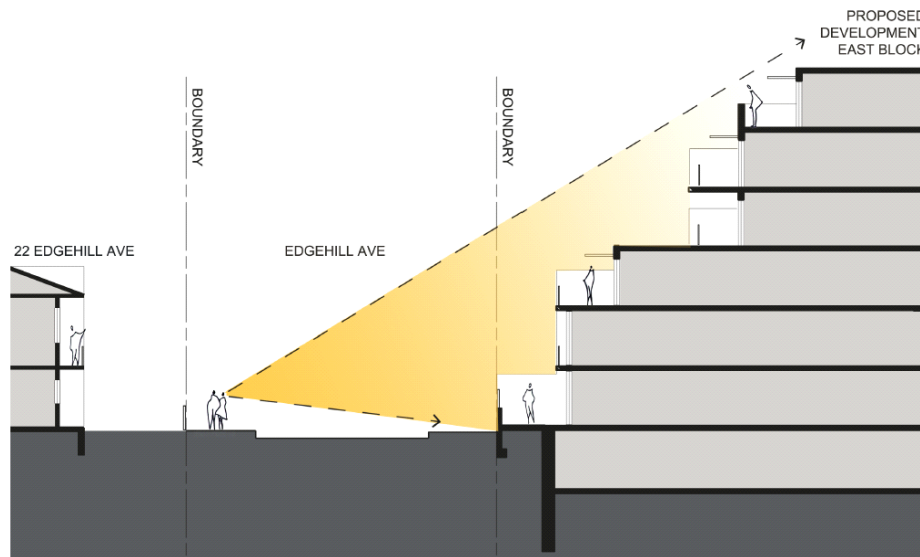


12

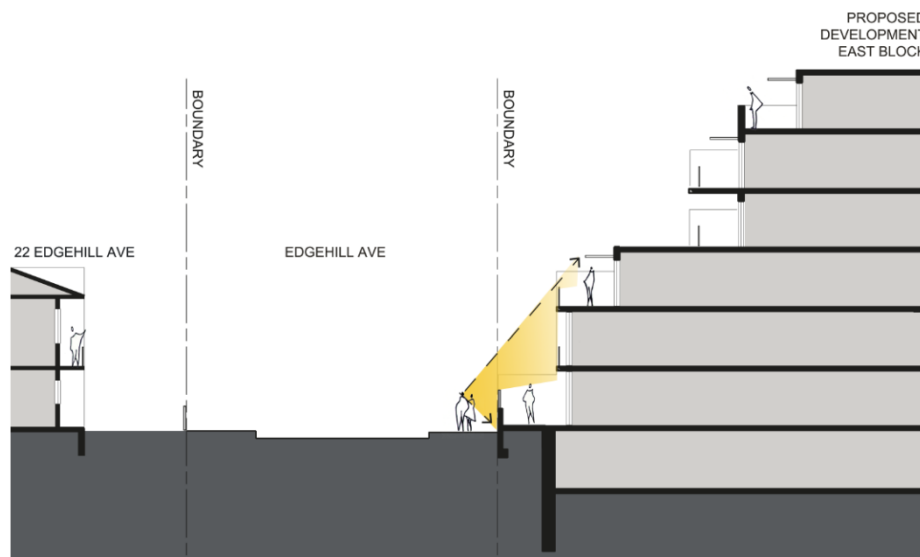
September 2014 – Amendments incorporating the modulated podium form, roof terraces and upper level setbacks



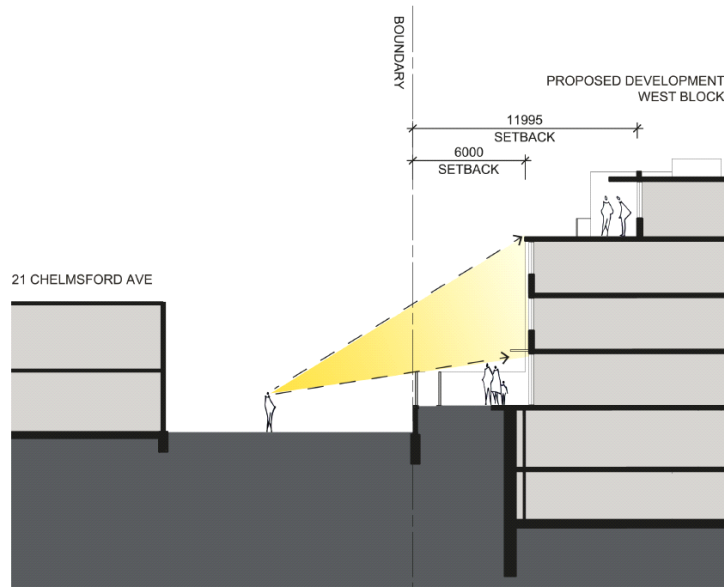
Section 1 – Two storey dwelling to townhouses fronting Edgehill Avenue



Section 2 – East Block ‘stepped form’ to dwellings on Edgehill Avenue



Section 3 – View of East Block podium form from pedestrian footpath



Section 4 – West Block to dwellings on Chelmsford Avenue